



TOMRA INSIGHT

EINE CLOUD-BASIERTE DATENPLATTFORM ZUR VERNETZUNG VON SORTIERMASCHINEN

FOOD FOR THOUGHT



“The factory of the future will have only two employees, a man and a dog. The man will be there to feed the dog. The dog will be there to keep the man from touching the equipment.”



Warren G. Bennis (1991)

IT WILL STILL LOOK LIKE A SORTER...





Reduce
Downtime



Maximize
Throughput



ACCESS TO INFORMATION UNLOCKS NEW OPPORTUNITIES



Reduce
Operational Cost

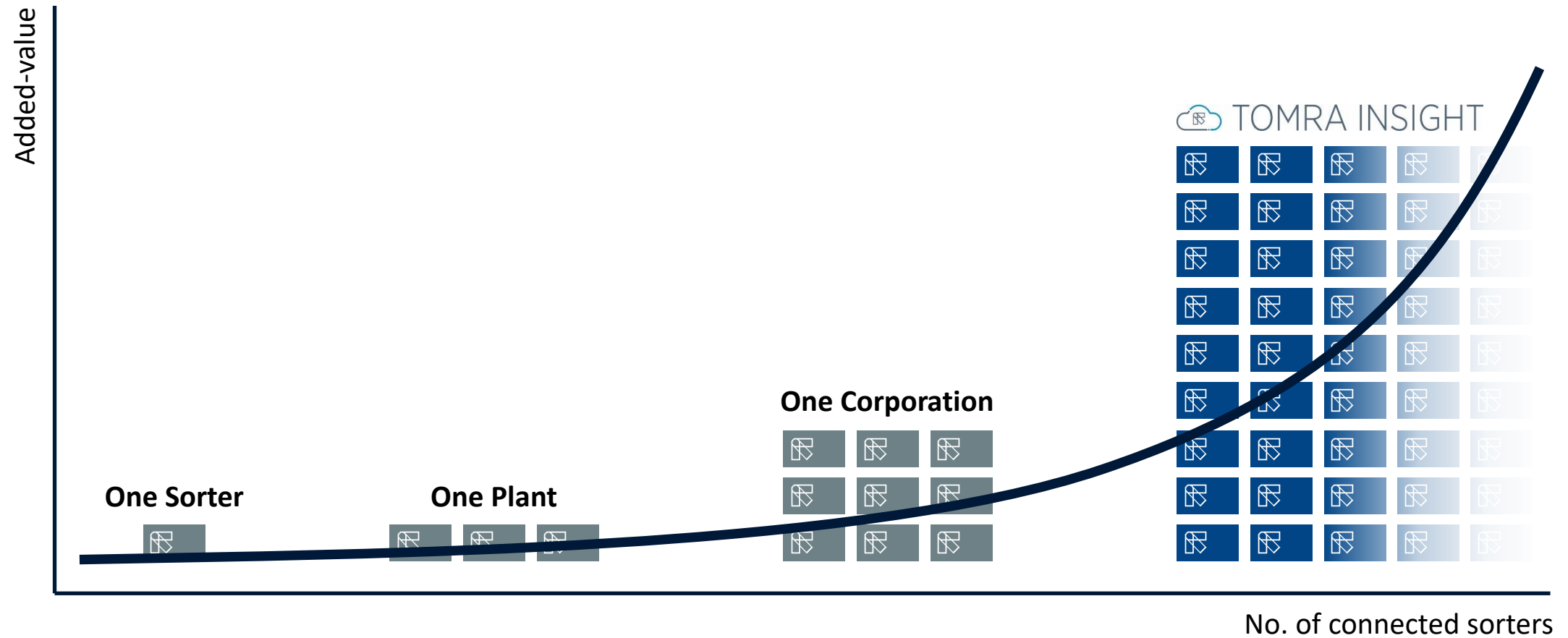


Sort to
Target Quality



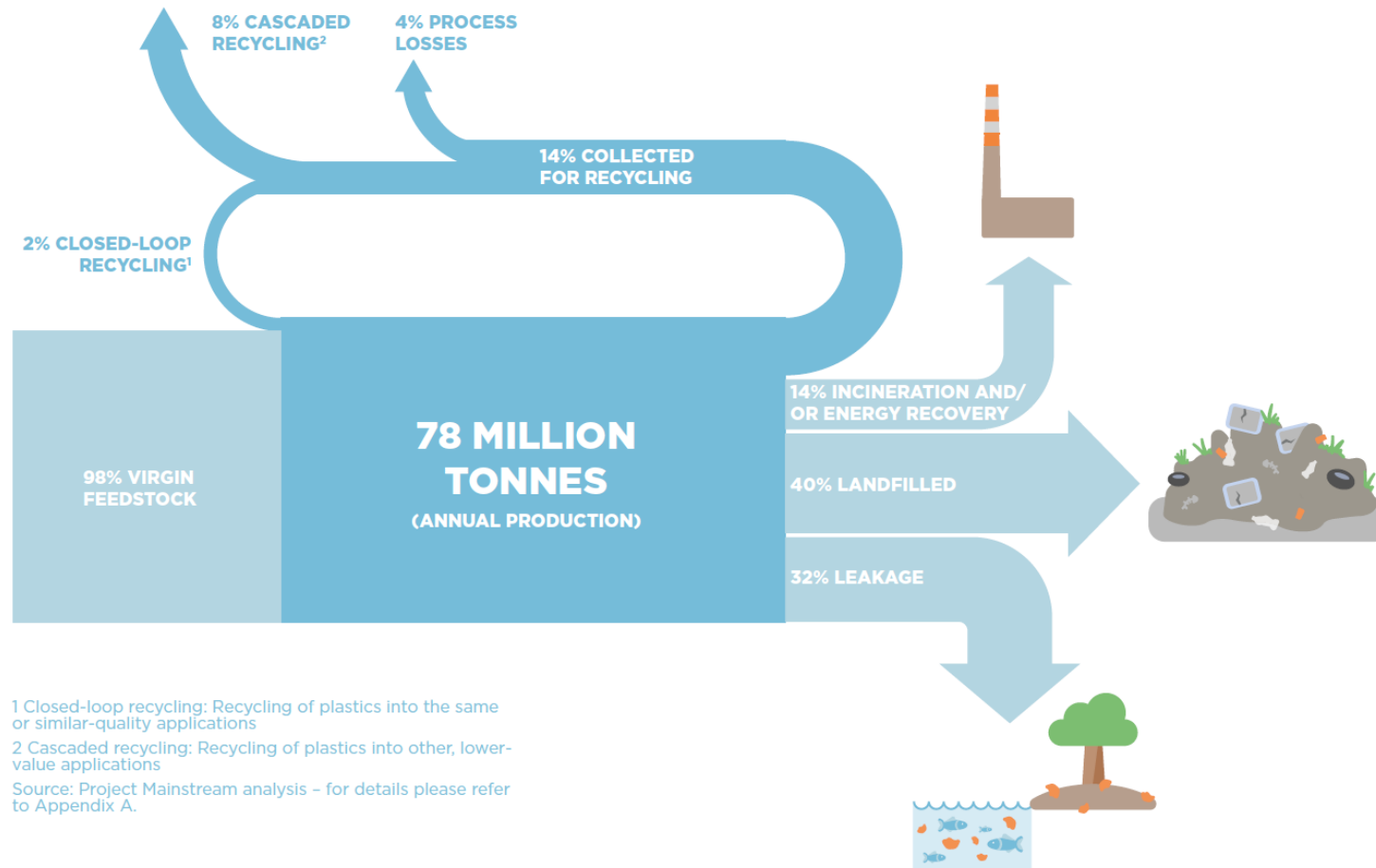
THE POWER OF DATA

Maximize your foundation for data-driven and fact-based decision making by increasing the sample size



VISION: DATA TRANSPARENCY FOR CIRCULAR ECONOMY

To substitute virgin feedstock we need to enable a stable supply of high quality recyclates



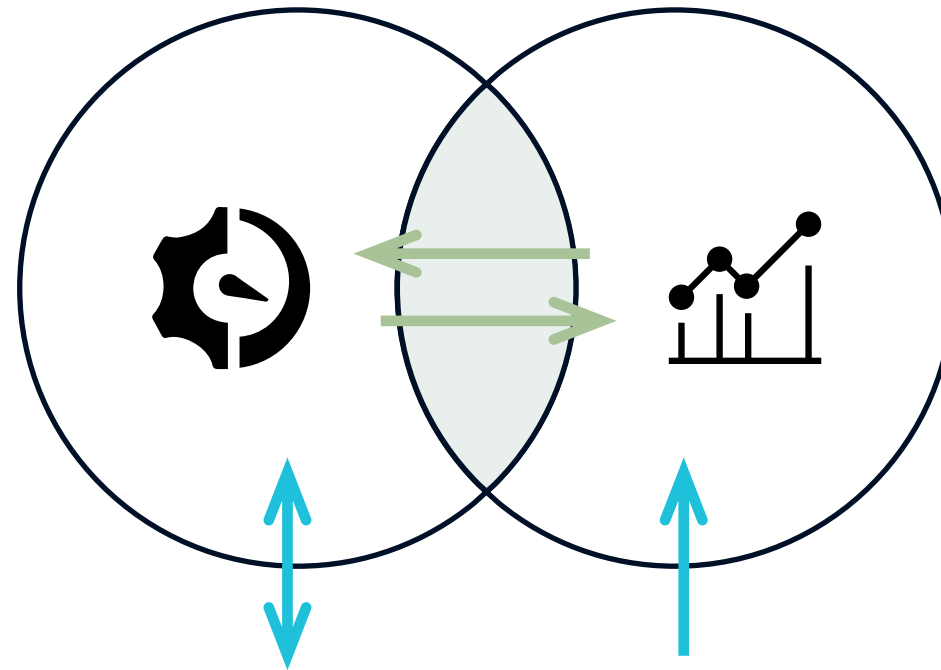
1 Closed-loop recycling: Recycling of plastics into the same or similar-quality applications
2 Cascaded recycling: Recycling of plastics into other, lower-value applications
Source: Project Mainstream analysis – for details please refer to Appendix A.

Image source
www.ellenmacarthurfoundation.org;
The New Plastics Economy: Rethinking the future of plastics & Catalysing action
December 13, 2017
<https://newplasticseconomy.org>

SCOPE OF SCADA VS. TOMRA INSIGHT

SCADA* System

controls the process and visualizes related alarms, performance, and control parameters



TOMRA Insight

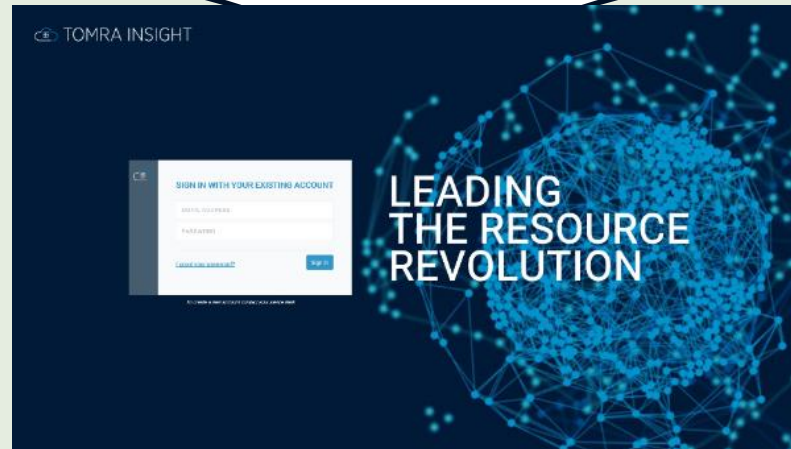
enables advanced analytics based on much larger data sets and time series

- Different types of interfaces are needed to fulfill specific requirements
- Common functionalities exist and information needs to be exchanged

*) SCADA – Supervisory Control And Data Acquisition

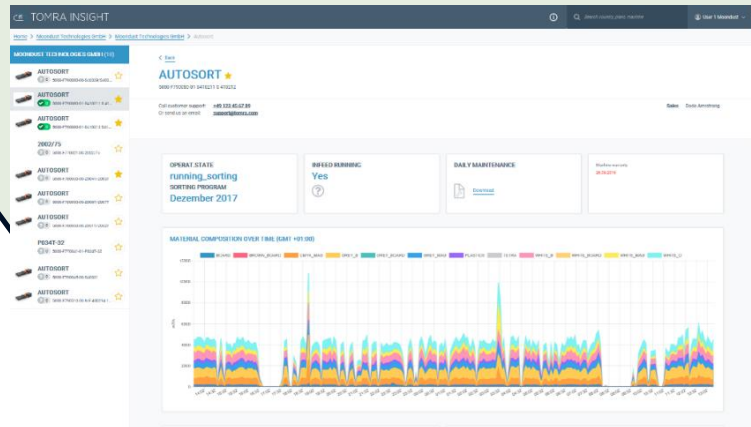
JOINING DIFFERENT DATA SOURCES

Data in Motion
Near Real-Time Data
from the machines

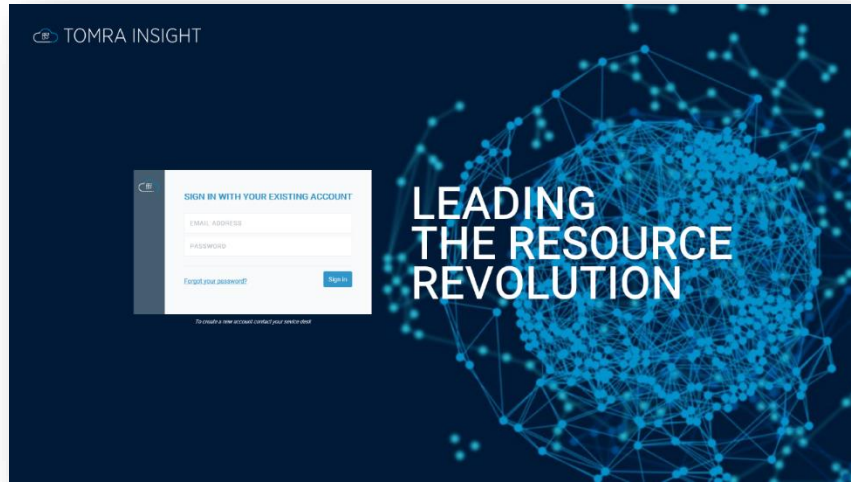


Data at Rest
Non Real-Time Data
about the machines

**TOMRA
Insight**

This screenshot shows another section of the Tomra Insight dashboard. It features a 'LATEST SERVICE ACTIVITIES' table with columns for Date, Order, Work type, Machine name, TOMRA reference, Status, and Service report. Below this is a 'SPARE PARTS PURCHASE HISTORY' table with columns for Part Number, Part Description, P/N number, Order Type, Order Date, and Order Quantity. At the bottom, there is a 'CURRENT OPEN INVOICES' table with columns for Invoice Number, Date, Due Date, Amount, Open amount, and ServiceReport.

DEVELOPMENT ROADMAP



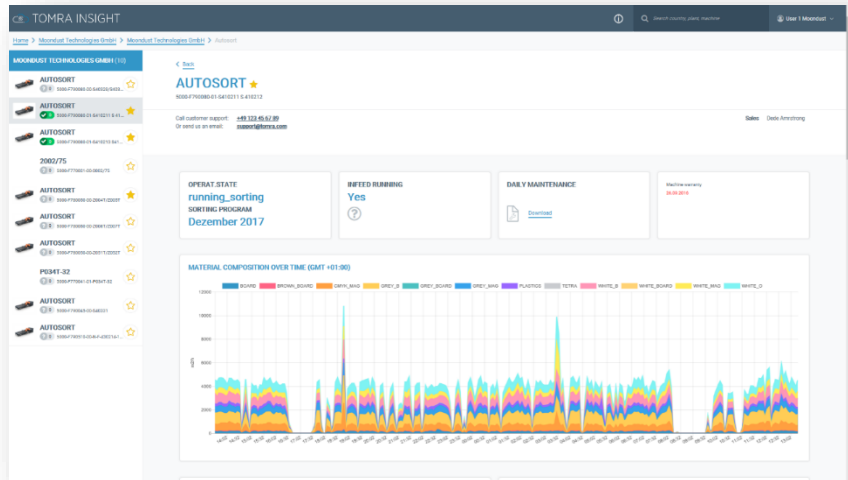
Monitoring and reporting for connected machines

- Improved transparency on actual performance
- Overview on related activities, e.g. service
- Preventive maintenance



Proactive operational management and service offerings

- Simple mobile application
- Simplified spare part ordering
- Condition based maintenance




today
future



Data centric value-added services and solutions

- Process optimization across multiple machines
- Automatic supply of predicted spare parts
- Predictive maintenance and services



SIGN IN WITH YOUR EXISTING ACCOUNT

EMAIL ADDRESS

PASSWORD

[Forgot your password?](#)

To create a new account contact your service desk

LEADING THE RESOURCE REVOLUTION

MOONDUST TECHNOLOGIES GMBH (10)

- AUTOSORT**
? 5000-F790080 ☆
- AUTOSORT**
✓ 5000-F790080 ☆
- AUTOSORT**
✓ 5000-F790080 ☆
- 2002/75**
? 5000-F770021 ☆
- AUTOSORT**
? 5000-F780050 ☆
- AUTOSORT**
? 5000-F780050 ☆
- AUTOSORT**
? 5000-F780050 ☆
- P034T-32**
? 5000-F770041 ☆
- AUTOSORT**
? 5000-F790045 ☆
- AUTOSORT**
? 5000-F790510 ☆

< Back

AUTOSORT ☆

Call customer support: **+49 123 45 67 89**
 Or send us an email: support@tomra.com

Sales Dede Amrstrong

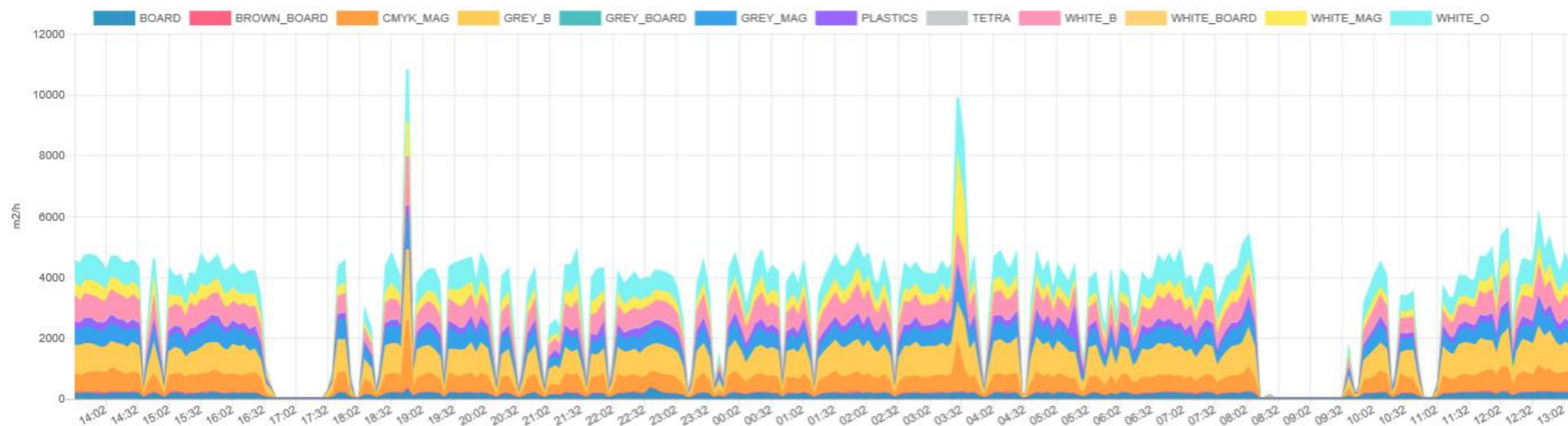
OPERAT.STATE
running_sorting
 SORTING PROGRAM
Dezember 2017

INFEEP RUNNING
Yes
?

DAILY MAINTENANCE
[Download](#)

Machine warranty
26.09.2016

MATERIAL COMPOSITION OVER TIME (GMT +01:00)



- REPORTS NEW
- Throughput Analysis
- Material Composition
- Morning Shift
- Throughput
- Special Analysis
- FAVORITE MACHINES
- AS-212 0
- Machines 10

THROUGHPUT ANALYSIS



Delete report

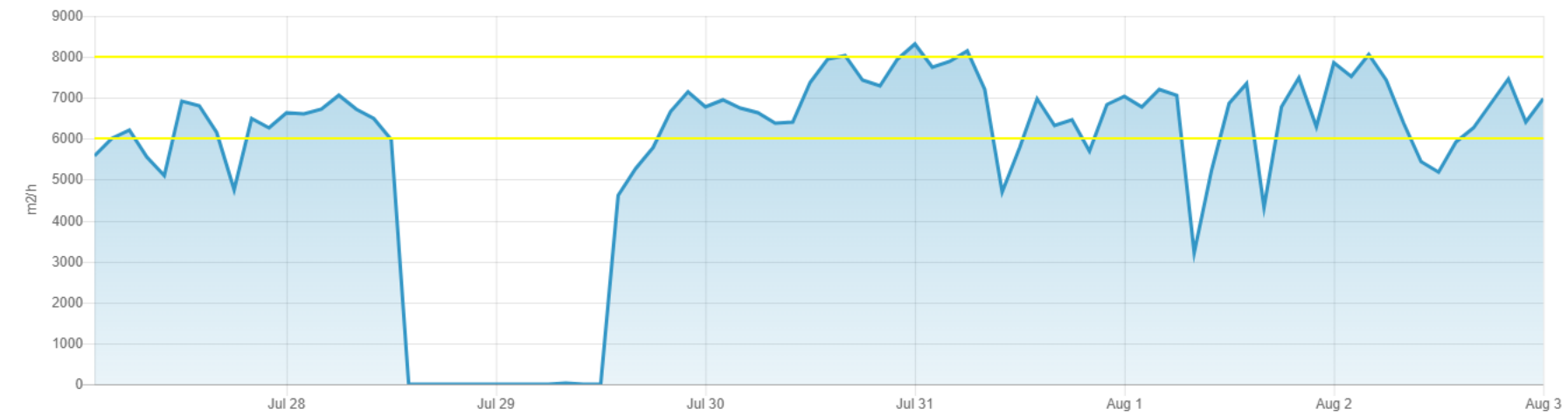


ADD A NEW STATISTIC

SORTING THROUGHPUT OVER TIME (GMT +02:00)

Delete

Timespan: 27/07/2018 - 03/08/2018
Batch / program: true

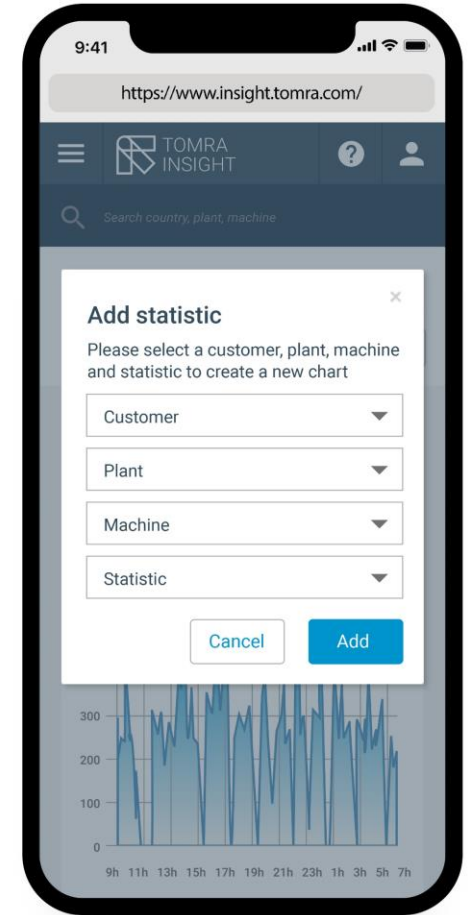
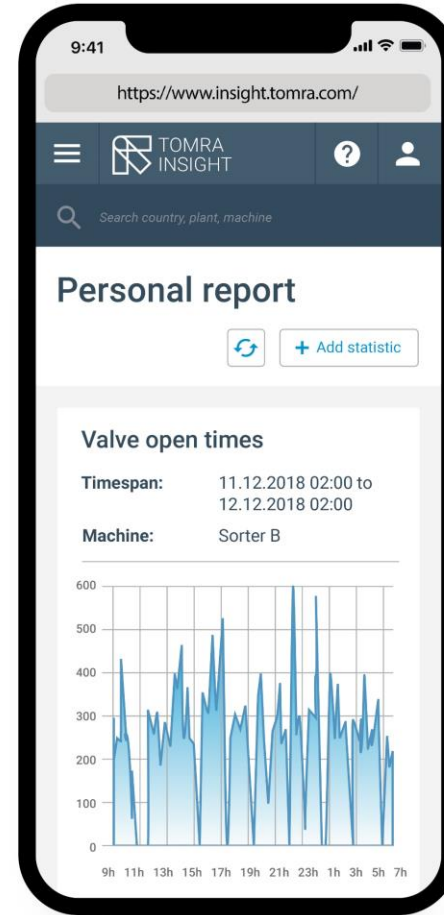
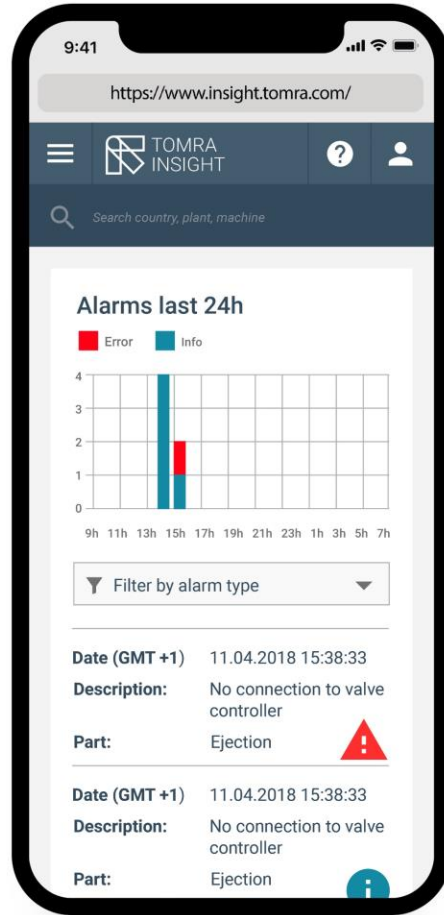
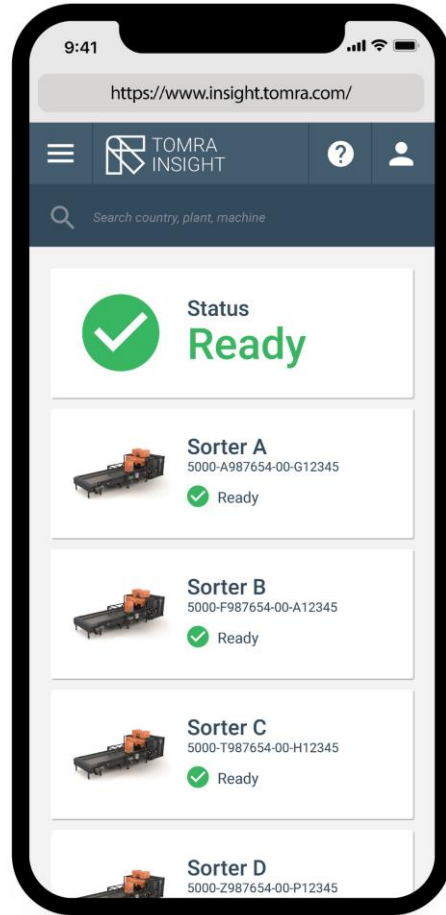


MATERIAL DISTRIBUTION OVER TIME (GMT +02:00)

Delete

Timespan: 31/05/2018 - 04/08/2018

MOBILE VERSION



**YOUR EXPERTISE
AND OURS,
CONNECTED.**

TOMRA Sorting Digital